

# SHOW N

# SHINE

CALL FOR  
ENTRIES



GUEST JUDGING AND APPEARANCE  
FROM **SHAUN & GRAHAM - 4WD 24/7**

**22-24 JULY 2022 SYDNEY SHOWGROUND**



**ENTRY IS  
FREE**

**Got a four-wheel  
beast that kicks up  
dust? A stunning van  
conversion? Or an  
impressive rig you'd  
like to show off?**

The Show N Shine competition is making its way back to the Sydney 4x4 Outdoors Show in 2022. Allowing members of the community to showcase their pride and joy to peers and the public alike. Your builds will inspire our 4x4 visitors to go above and beyond with their own projects. Become part of our community and you'll never look back.

Show N Shine caters for all sorts of vans and rigs; new school and old school; battle-hardened off-road rigs; multi-purpose work rigs; well-travelled vans and even weekend show ponies. We want them all!

If you have an interesting van, rig and build experience story then get involved and enter now.

**NATIONAL**  
**4x4 OUTDOORS**  
**SYDNEY SHOW**

**22-24 JULY 2022**  
**SYDNEY SHOWGROUND**

# SHOWN SHINE

CALL FOR  
ENTRIES!

## Why enter?

- Show your rig off at the Sydney National 4x4 Outdoors Show
- Rigs on show get 2 x free tickets to the show (\$40 value) + free parking (as your rig is in the show!)
- \$1,000 cash prize for Best in Show winner, \$500 for category winners and \$250 for runner ups
- A range of prizes, merch and trophies up for grabs
- It's free to enter
- Winners get bragging rights with mates, or at your club
- Have a fun day out

## CATEGORIES

### ROUGH & TUMBLE

With a focus on functionality and off-road capabilities, it might not be pretty, but when things get serious it can be relied on to get you home.

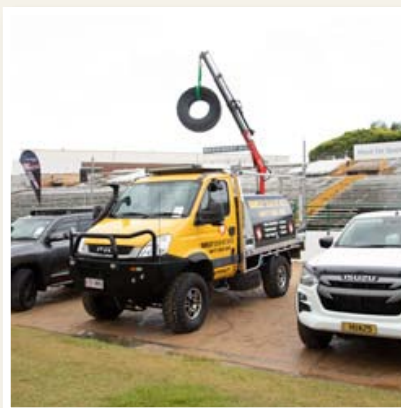


Expected upgrades include but are not limited to:

- Body armour
- Roll cages
- Big flex
- Lockers
- Reduction gears
- Off-road tyres
- Winches
- Light bars (off-road)

### TOUGH TRADIE

Work hard, play hard. The Tough Tradie is business during the work week, but fierce on the weekends. The focus is on multi-purpose capabilities, open to utes with trays or canopies.

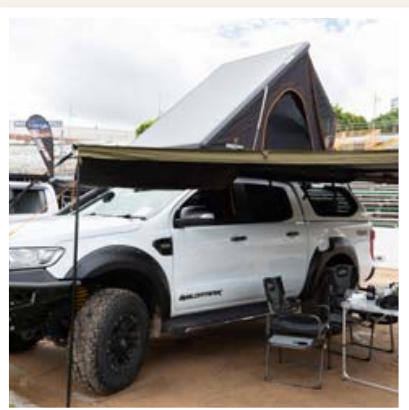


Expected upgrades include but are not limited to:

- Storage
- Roof racks
- Towbars
- Functional upgrades

### TERRIFIC TOURER

The Terrific Tourer gets around, both on the road and the road less travelled. Good at towing loads, fuel efficient and strong. With a focus on towing capacity, rapid deployment at destination and long haul reliability.



Expected upgrades include but are not limited to:

- Lifted/Re-engineered suspension
- Long range fuel tanks
- 12v setup
- Off-grid capabilities
- Informatics
- Rooftop tents
- Rear cabins
- Storage compartment

### URBAN STALLION

This is the King of the Bling category - flashy, flamboyant, and photogenic. The Urban Stallion looks like a supermodel; turns heads in the city but prefers to stay out of the mud. The focus is on looking good on the city streets. Geared toward Sports utes or high end SUVs, with eye-catching, attention-grabbing accessories/paint-jobs.



Expected upgrades include but are not limited to:

- Wheels
- Body Kits/bodywork
- Cosmetic bull bars
- Custom Audio/Stereo

# SHOW N SHINE

## How it works

- Select the category you want to enter and complete the online entry form
- Entries will be judged down to a short list of 10 per category that will be invited to display at the show. The shortlist will get free entry to the show.
- Judges will be experts from the 4x4 industry including our partners
- You need to be able to attend the show either Saturday 23 July or Sunday 24 July. We will let you know which day on July 11 after the shortlist has been determined.
- This is a major feature at the show and so rigs are on display. You will need to enter between 7.00 am – 7.30 am and stay until 6.00 pm. No exit will be allowed before 6.00 pm (5.00 pm Sunday). You will need to allow show visitors to look inside, and around your vehicle.
- Judging will take place throughout the day, with the winners being announced at the end of each day. Time to be confirmed!

## Timelines

- |                   |                       |
|-------------------|-----------------------|
| 25 May 2022       | - Entries Open        |
| 8 July 2022       | - Entries Close       |
| 11 July 2022      | - Shortlist finalised |
| 23 & 24 July 2022 | - Sydney Show         |

## Entry Rules

- All rigs must be road registered
- Rigs must be on display as per the entry information given

## Got any questions?

Contact Steph Davis via: [sdavis@etf.com.au](mailto:sdavis@etf.com.au)

## Enter:

<https://4x4show.com.au/Sydney/whats-on/show-n-shine>



NATIONAL  
**4x4** OUTDOORS  
SYDNEY SHOW

**22-24 JULY 2022**  
SYDNEY SHOWGROUND